

# WANDER OUTBACK

## 48 HOURS IN

# GASCOYNE JUNCTION

### DAY ONE: CARNARVON TO GASCOYNE JUNCTION (176KM) WELCOME TO GASCOYNE JUNCTION.

09:00

It's time to head east into the real outback of Western Australia to experience the 2022 WA Tidy Town Sustainable Community Winner Gascoyne Junction. Leave the coastal town of Carnarvon behind as you drive on sealed roads to the start of the Real Outback. Gascoyne Junction is an inland oasis sitting where the Gascoyne and Lyons Rivers meet, with wide open streets and green spaces to explore.

10:00

Along your two hour drive, you will have the chance to stop and explore Rocky Pool, a permanent waterhole on the Gascoyne River, marvel at the claypans bordering the roads. Look out for families of emus that love to call this spot home. Cross the Dampier Bunbury Gas Pipeline and learn about this significance of this project to the Gascoyne River before entering the Shire of Upper Gascoyne and the Outback.

11:00

25km from Gascoyne Junction to your left, the ancient Kennedy Range National Park (Mundatharrda) stands on the horizon. Stop at Salt Gully, 20km from town for a great vantage point. 10km from town take a short detour to the gates of the Junction Race Club that was established in 1907. The Junction Races are held annually in August. This ticketed event sells quickly when tickets are released so plan ahead if this is on your to do list of experiences whilst visiting the Junction.



On entering Gascoyne Junction you will be greeted by a Cessna VH-DMT which towers above the Two Rivers Memorial Park. The aircraft is part of an outdoor museum that shares stories of pastoralists from across the Upper Gascoyne and their role in pioneering aerial mustering not only here, but across Australia. The park is great spot to enjoy lunch with rolling green lawns and shaded picnic tables.





13:00

Leaving the Two Rivers Memorial Park behind turn left out of the drive through car parks designed for caravans and make your way to the Gascoyne Junction Pub and Tourist Park which will be your home during your stay in Gascoyne Junction. Check in with the friendly staff at the Roadhouse/Café and get settled at your site. Most sites offer breathtaking views to the Kennedy Ranges and a perfect for watching the sunset behind this backdrop.

14:00

Pop on your walking shoes and make your way to the Gascoyne Junction Historical Museum located next door to the Gascoyne Junction Community Resource and Visitor Information Centre. The Museum is housed in the original Shire Road Board building. Inside you will find a collection of rocks highlighting the geological diversity of the Upper Gascoyne, along with artefacts representing life in Gascoyne Junction and the Upper Gascoyne as pastoralists moved into the area from 1877. Pastoral equipment and communication equipment are also on displaying showcasing how changes and advances in technology have changed over time.

15:00

Meet your tour guide next door to the Museum for a free walking tour of Gascoyne Junction. Learn about life in this remote town of 70 people from a local as they share stories of the history of the town, and also about life today. During the tour you will learn about the community, education, services, take in the War Memorial, learn about the 2010 flood and understand how the town footprint has changed since then. The tour concludes back at the Junction Pub & Tourist Park.

16:00

Enjoy a cool drink after your walk in the grassed beer garden at the Junction Pub and Tourist Park or have a dip in the pool. As sunset draws near either pool up a chair at your caravan or take a short drive across the Killili Bridge where you went on your walking tour and cross to the other side of the Gascoyne River to the waterhole and watch and listen as the local birdlife start to settle in for the evening and watch the sunset and the night sky appear above you. Unpack your stand up paddle board or kayak and get a different vantage point of Gascoyne Junction – from the Gascoyne River!





18:00

Enjoy #junctionpubgrub this evening with our renowned Chef Omo in the kitchen at the Junction Pub and Tourist Park. Take in the history on the walls as you chat with fellow travellers and locals.

20:00

Gascoyne Junction is a dark sky town so make sure you take some time to discover the night sky. Book an Astronomy and Dark Sky Tour with local operator Wooramulla Eco Journeys or head back to the waterhole and view the milky way with your own eyes, your binoculars or telescope. For those Astrophotographers in your travelling party we also have an Astrophotography hotspot where you can use your camera to capture stunning images of a starry night sky over the Cessna VH-DMT at the Two Rivers Memorial Park.



### ACCOMMODATION: GASCOYNE JUNCTION PUB AND TOURIST PARK

Ensuite, Powered and Non-Powered Caravan Sites Available

Chalets and Cabins are also available.

W: [www.junctiontouristpark.com](http://www.junctiontouristpark.com)

T: 08 9943 0868

### DAY TWO

### GASCOYNE JUNCTION – KENNEDY RANGE NATIONAL PARK

(120km round trip)

08:00

This morning you will head north from Gascoyne Junction to explore the prehistoric landscapes of Kennedy Range National Park. From the Junction the Ranges rise from the horizon but it's time for you to explore the unique land formations, ancient fossilised ocean beds and hidden petroglyphs for yourself up close.

09:00

Spend the morning hiking the trails of the Kennedy Range National Park. There are several trails in the park which give you the opportunity to explore the park's range country and its plant and animals.

Temple Gorge Trail: The Temple Gorge Trail is 2km return and hikers should allow 1 to 2 hours to complete. The trail is classified as a Class 3 for the left fork trail and Class 4 for the right fork trail.



**Drapers Gorge Trail:** The Drapers Gorge Trail is a Class 4 trail which will take between 1 to 2 hours to complete. The return length of the trail is 2km. The trail gets progressively harder as you pass by seasonal waterfalls and small rock pools.

**Sunrise View Trail:** The Sunrise View trail is a raised viewing area a short walk from the carpark with a good view of the battlement like face of the range. As the name suggest an earlier start to the day to observe at sunrise is special. This Class 3 walk is 300m return and will take approximately 30 minutes.

**Escarpment Base Trail:** With starting points at both Drapers Gorge and the Temple Gorge Campground, this trail leads into a narrow gorge which will see you ascend to the top of the range for spectacular views. The trail is 3.4km return will take approximately 1.5 to 3 hours. It is a Class 4 Trail.

12:00

Honeycomb Gorge is still waiting for you to visit. This 600m return, Class 3 trail will take around 20 to 40 minutes on your own. The trail turnaround has you standing in a large amphitheatre with honeycomb cavities that have been eroded into the cliff face.

To explore this gorge and the Kennedy Ranges (Mundatharrda), this afternoon join a Kennedy Ranges Cultural Tour with Wooramulla Eco Cultural Journeys. Hear the Ant Dreaming story connected to Honeycomb Gorge (Mingah Mundah), a place of great spiritual significance to the Yinggarda people. Discover traces of Yinggarda ancestors in the markings they left behind. Depending on seasonality there are also options to choose from the following tour options also: Wildflower Walkabouts (Late June to Early September), Burrowing Bees and Bush Lolly (Early Spring) and Natures Supermarket Bushfood Experience (Late June to Early October).



15:00

Return to Gascoyne Junction stopping at the Lyons River crossing to appreciate this second great waterway of the region. The Lyons and Gascoyne River meet in Gascoyne Junction. The water catchment area for this water system is over 80,000 square kilometres. You will also pass by the historic Cobbled Road built in the 1920s as motorised vehicles moved into the area to move mail and stores replacing the camel trains of days gone by.



16:00

As your time in Gascoyne Junction comes to a close perhaps take a different view of all that you have seen over the past two days with a helicopter ride over Gascoyne Junction and the Kennedy Ranges. Appreciate the vastness of pastoral stations and see how the waterways carve through the landscape. Bookings are essential and can be arranged through the Gascoyne Junction Pub and Tourist Park.

18:00

The kitchen is again open at the Junction Pub and Tourist Park, so make sure you try that other meal that you couldn't decide about last night. Enjoy a game of pool with locals or play some music on the jukebox. Share a yarn with fellow travellers or learn more about life in Gascoyne Junction from a local. Oh, and don't forget to try Chef Omo's Malva Pudding... You will be thanking us.

20:00

Don't forget to look up again tonight. Switch off the phone and enjoy the quiet and clear night skies. On a full moon you can watch it rise above the horizon. Take some time to reflect on your wander outback. Thank you for visiting.



### **ACCOMMODATION: GASCOYNE JUNCTION PUB AND TOURIST PARK**

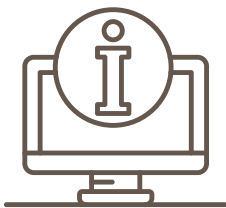
### **DAY THREE: GASCOYNE JUNCTION TO YOUR NEXT DESTINATION**

06:00

Enjoy another Gascoyne sunrise in Gascoyne Junction. After breakfast it's time to get the caravan hitched again for the next travel adventure.

If you have a little longer to spend in the Upper Gascoyne, the world's biggest rock Mt Augustus is approximately 300km to the north-east of Gascoyne Junction. Take the van to enjoy caravan sites with stunning views of Mt Augustus, alternatively, you can leave the van with the team at the Gascoyne Junction Tourist Park for a small fee and enjoy the self-contained units at Mt Augustus as you conquer the walking trails in the National Park.

Safe travels to your next destination and thanks for taking a Wander Outback.



For more information contact the Gascoyne Junction Community Resource & Visitor Information Centre

T: 08 9943 0988

E: [visitorcentre@uppergascoyne.wa.gov.au](mailto:visitorcentre@uppergascoyne.wa.gov.au)

W: [www.uppergascoyne.wa.gov.au/tourism.aspx](http://www.uppergascoyne.wa.gov.au/tourism.aspx)

F: [visituppergascoyne](http://visituppergascoyne)

I: [shireofuppergascoyne](http://shireofuppergascoyne)